

# WGO

## WHAT'S GOING ON...

AUTUMN 2010

Is for all children and young people with disabilities and special educational needs, plus their parents, carers and front line service providers. By special needs we mean learning disabilities, physical disabilities, sensory impairments, specific learning problems (eg dyslexia and dyspraxia) and children with behavioural difficulties.

# Parents as Short Break Providers



**Aiming High for Disabled Children and the Short Breaks Transformation programme has provided a unique chance to commission new services, try new things and create new opportunities for children, young people and their families.**

One of the most significant successes has been the opportunity to commission parent/carer-led organisations, supporting them to become recognised and established providers of Short Breaks.

The Ray of Hope group, based in Hillsborough, provides support and information to parents of children with special needs. They aim to raise awareness of ADHD, ADD, Autism, Asperger Syndrome and associated conditions. The group operates a

fortnightly club and they also run a range of activities on weekends and throughout the School Holidays. Children have been able to take part in activities ranging from skiing to pantomimes, with the organisation being totally led by the parents of the children who attend.

Jayne Raynor, Project Manager, Ray of Hope:

"Thanks to support from the Council, Ray of Hope families have enjoyed a fun filled, action packed adventure at least once a week during the school holidays. Trips included Knowsley Safai Park, Cleethorpes and Lightwater valley. It is important to look at the needs of all the family and plan inclusive activities. All our trips were suggested by the children. Friendships blossomed, often forged by the children, which lead to parents meeting up too. Sometimes having that person in your life who knows what you are going through is essential."

Aspergers Children and Carers Together (ACCT) is a group that provides support services for families of children with Asperger Syndrome in Sheffield. With support from Sheffield City Council they have been able to expand the scope of the services they offer, such as the popular Activate Children's Club. They have also created a fortnightly teenager's group, which provides youth club-style evening activities for young people with Asperger Syndrome. In addition, they have been able to recruit a Service Manager and an administrator to support the organisation to move forwards.

ACCT's Co Founder, Deborah Woodhouse:

"It has been fantastic for ACCT to be commissioned to deliver Short Breaks services. As the organisation is run by parents of children with Aspergers, our staff and volunteers have access to vast experience and expertise that only parents can have. Families who access our services can have confidence that we understand their circumstances and will be able to provide quality activities for their children."

Together, Ray of Hope and ACCT provide services to well over a hundred families across Sheffield and play a pivotal role in many of those families' lives.

### Ray of Hope

Tel: **0114 2490797**

E-mail: [rayofhope@blueyonder.co.uk](mailto:rayofhope@blueyonder.co.uk)

### ACCT

Tel: **0114 2521911**

E-mail: [enquiries@acctsheffield.org.uk](mailto:enquiries@acctsheffield.org.uk)

### Short Breaks Grants are Still Available!

If you are the family of a disabled child or young person and have not yet applied for a Short Break Grant from Sheffield City Council, you may be eligible for up to £370.00 to access a Short Break. To receive an application form please contact **Catherine Calton** on **0114 2398336** or **Catherine**. [calton@sheffield.gov.uk](mailto:calton@sheffield.gov.uk).

Alternatively, you can contact the **SIGN** information service for further information and an application form. Tell: **(0114) 266 9476**.

Please note that applications must be received by **31st December 2010**.

THIS ISSUE OF 'WHAT'S GOING ON' HAS BEEN FUNDED BY THE SHEFFIELD INDEX OF CHILDREN AND YOUNG PEOPLE WITH DISABILITIES

The agencies and organisations involved in this Newsletter:

### **SIGN Information Service**

Contact the Sheffield Information Giving Network, 10.00-3.00pm, Monday to Friday, out of hours answerphone, on:

**0114 266 9476**

### **Sheffield INDEX of Children and Young People with Disabilities**

Contact the Under 19s Disability Register on:

**0114 271 7626**

### **Parent Partnership Service**

Contact the impartial education advice service on:

**0114 264 0033**

### **Children and Young People's Social Care**

Contact: **0114 273 4855**

Please remember that WGO cannot recommend, authorise or take responsibility for any of the services, groups and activities mentioned in this newsletter.

As parents it is your responsibility to ensure that the services, groups and activities are safe for your child. We suggest that you make sure that they have received the necessary approval to carry out the activities and the training to meet your child's needs.

Please send any comments, articles or ideas for the Newsletter to any of the organisations above.

# Support group news

## ACCT: Asperger's Children & Carers Together becomes Sainsbury's Charity of the Year!

Sainsbury's Supermarket at Archer Road have pledged support to ACCT by awarding them Local Charity of the Year status for 2010/2011. They will run a series of fun days and activities and undertake to raise £10,000 for ACCT who support children and families affected by Asperger's syndrome and high functioning autism.

Deborah Woodhouse, Co-Founder and Director said 'we are delighted to have the support of Sainsbury's to raise funds for our charity. This money will pay for fun trips and experiences for families, siblings and children and teenagers with Asperger's Syndrome. We had a wonderful day trip to Cleethorpes in August and have plans to visit Aerial Extreme, a climbing experience at the back of Ice Sheffield. We also plan to have a trip to The Institute of Sport and are organising a sibling trip to Kingswood Camp near Barnsley in October. ACCT have professional staff and trained volunteers to help ensure children and families are supported whilst enjoying activities. If you have a child

with Asperger's syndrome or high functioning autism please contact us and join in the fun!

For information and to join ACCT contact: ACCT – Sheffield Carers Centre, 7 Bells Court, Bells Square, Sheffield S1 2FY, Tel: **0114 2521911**, E-mail: [enquiries@acctsheffield.org.uk](mailto:enquiries@acctsheffield.org.uk), [www.acctsheffield.org.uk](http://www.acctsheffield.org.uk)



## O2 Kids

- A toddler group exclusively for children who are oxygen dependent (including babies)
- Meeting monthly on Monday mornings at EARLY DAYS Children's Centre, Palgrave Road, Parson Cross. S5 8GS

**9.30 – 11 am**

**18th October**

**15th November**

**13th December**

**10th January 2011**

- Come and meet parents and carers, have a chat and share experiences.

For any enquires please contact **Donna - 07856545495**



# MILAAP



MILAAP is a support service that aims to enhance the quality of life for Asian parents of disabled children. Offering free information, help and support in a caring, understanding and bilingual (Urdu and Punjabi) environment MILAAP provides asian women with:

- Space and time to meet, to support each other and develop themselves
- An opportunity to build confidence
- Time to try new skills
- A place in which to create awareness of their own identity, strengths and abilities

- An opportunity to increase their understanding of disability

MILAAP promotes the social, economic, religious and academic development of Asian women. The project is committed to encouraging its members to be more confident in expressing their views, both individually and collectively.

Group sessions are held on:

- Mondays 1 – 3.00pm at Firth Park Old Library
- Tuesdays 1 – 3.00pm at the Pakistani Muslim Centre
- Wednesdays 1 – 3.00pm at Rushey Meadow

Free transport and crèche facilities are provided.

For more information please contact **Misbah Hussain** on **07961 169318** or **(0114) 273 5368** and **Kausar Ali** on **(0114) 205 3974**.

## Parents, I need your help!

I am a project coordinator working in the Children and Families Team for Sheffield City Council and I would like to start a Saturday Club which will include children who are under 5 and/ or have complex needs.

I would really REALLY like to see it run by parents, who would take turns, on a rota basis to staff and support the club. This could mean that you would be supporting the club for one session in four, and then have 3 sessions off as a short break/respite whilst your child attends the club.

Sheffield City Council have agreed to fund CRB checks for parents, and also to fund any relevant training for those involved ie Makaton, Moving and Handling, whatever you need! This means that you can build up your skills, add the training on to your CV AND benefit from a short break. Training will only be available to those parents who take part on the rota. However, parents who are unable to help with the running of the club are still very welcome to attend!

A venue has not yet been confirmed but I am hoping to use one of the Children's Centres, and one with a sensory room would be perfect. The referral route in to the group would be via SNIPS.

So I just wanted to ask readers of *WGO* if you

- a) think it is a good idea and
- b) want to help set up and support the club

Please feel free to contact me with any questions or to express an interest in supporting the group – I can't do this without you!

**Linda Wright : 07837188995 / 2052656**  
[linda.wright@sheffield.gov.uk](mailto:linda.wright@sheffield.gov.uk)

## The Sheffield Royal Society for the Blind (SRSB)

### "Supporting People with Sight Loss in Sheffield"

'Little Sparklers' is a pre-school group for visually impaired children. It runs weekly on Wednesday mornings at the SRSB building on Mappin Street, except for the third Wednesday of every month, when they hold the session at the hydrotherapy pool at Norfolk Park.

Children can go along and play with a wide range of sensory toys and equipment. The group is also visited regularly by other agencies such as Speech and Language, Low Vision and the Carers Centre – so parents/ Carers can have a chat and get some useful information while their children play and make friends.

For more details please contact **Joanne Ardern** on **(0114) 267 7747**.

The Sheffield Royal Society for the

Blind, 5 Mappin Street, Sheffield S1 4DT

'Actionnaires' is a multi-activity club for blind and partially sighted children, young adults, their siblings, and friends.

The club is designed to cater for eight to sixteen year-olds. Younger children are welcome to join in but must be supervised by a responsible adult.

The club runs every Sunday at Westfield School Sports Hall from 10.00am until 1.20pm.

For further information please contact **Phil Wagstaff** at **Action for Blind** on **07894 598 766** or **Joanne Ardern** at **Sheffield Royal Society for the Blind** on **0114 272 2757**.

# Sheffield Parent Carer Forum – Sunday Fun Day



**11th July 2010**

Sheffield Parent Carer Forum held its very first Fun Day for children with disabilities and their parents, carers and siblings on Sunday 11th July. The event was held at The Centre in the Park, Norfolk Park, using both the indoor facilities and the huge parkland surrounding it.

We were thrilled to play host to over 300 people in total – a wonderful mix of children and young people with a range of disabilities, and their families. The sun shone all day so attendees were able to enjoy all the planned outdoor activities.

The two bouncy castles were a massive hit and were well and truly bounced for the whole day. Also very popular were the two orienteering courses and the “mini beast” hunts.

Also outdoors were the megastars of the day – three of South Yorkshire Fire and Rescue’s finest, who brought their fire engine with them. They were a brilliant bunch and wonderfully funny and attentive to children and adults alike.



Indoors, we were extremely fortunate to have the services of two fantastic face-painters. Both toiled non-stop for four hours, with queues stretching all down the corridors. Tiny fairies, butterflies and assorted superheroes gradually emerged, to the delight of children and adults alike.

In the Community Hall, drumming workshops proved to be very popular and communal affairs. As one astute youngster commented on our graffiti wall: “You can do your own beat, but they all sound fab together!” Later on, the tremendous Madame Zucchini put on a hilarious show – with vegetables – and then helped the children to make mini vegetable sculptures. A number of parents commented that this was a brilliant idea that they could try out at home.

We were delighted to have representation from South Yorkshire Police in the form of a Community Support Officer, who provided information on how the Police work within local communities.

Alongside the Police stall, we were really pleased to have a representative

from Sheffield City Council who was present to consult parents and young people about what type of facilities they would like to see in Community Playgrounds. Feedback from attendees was very diverse and interesting. Sheffield Information Giving Network (SIGN) also had a stall with loads of really useful information, as did Asperger’s Children and Carers Together (ACCT).

Children who were feeling a bit overwhelmed by the day were able to use the Chill-out Sensory room, with soft lights, music and other sensory equipment (kindly lent to us by ACCT). Many thanks to Gavin and Pat for giving up their day as volunteers to look after these visitors.

Loads of lively and creative fun was provided by David and Sue Roe and their fabulous children, who spent the day supporting children in the Arts and Craft area. Wonderful, imaginative offerings emerged, including decorated pyramids, Mexican Eyes and assorted paintings.

So, a busy and highly enjoyable day all round. Sincere thanks to everyone who gave their time, ideas and support, both in the planning and execution of the day. The setting was fabulous and all the staff at Norfolk Park were tremendously helpful and supportive. It was a really great team effort. Back to that astute young drummer and the graffiti wall comment – “You can do your own beat but they all sound fab together.” Indeed.

## Families in Crisis Grant

In recognition of the hardships faced by many families in the current recession, leading charity Family Action has introduced a new grant for the most disadvantaged.

The Families in Crisis Grant is a new grant especially for families who have a child aged up to 18, and who are having difficulty paying for basic needs

such as school uniforms, school trips and baby equipment. The organisation also gives general grants of between £100 and £300 for beds, cookers, clothing, communication aids and equipment. Both Families in Crisis and general grant applications need to be performed by professionals such as a Health Visitor, CAB Worker or Social

Worker. Forms can be downloaded from [www.family-action.org.uk](http://www.family-action.org.uk). Alternatively you can phone Family Action on **020 7241 7459**. The phone line is open on Tuesdays, Wednesdays and Thursdays from 2.00pm to 4.00pm. Details of your local CAB service are available from SIGN information service **(0114) 266 9476**.

# Sheffield Parent Partnership Service – update

It's been quite an exciting, and exhausting, 12 months, for Sheffield Parent Partnership Service, during which time the team has grown in number and we have relocated to larger premises. So who are Sheffield Parent Partnership and what do they do I hear you ask?

Firstly, let me introduce you to the team. Your first contact with the service is likely to be Lorraine Wild, our Senior Business Support Officer. Lorraine will listen to what you have to say, ask you a few questions to gain some background information and may give you some initial information and advice. She will probably arrange for a Casework Officer to meet with you to look at things in more depth, and advise and support you through 'next steps.'

Our Casework Officers are Tracey Gillin, Sally Morrison and Julianne Smith and, between them, they cover the whole of the city. Their role is to ensure you have all the information you need, to advise you of the options open to you and to support you along which ever path you choose.

Our newest member of the team is Lydia Wilson who is our Volunteer & Parent Support Co-ordinator. To extend the range of services we can offer to parent/carers Lydia will be looking at recruiting, training and supporting a range of volunteers who might like to help run information drop-in sessions within the local community, or become involved in the other activities. If you are interested in hearing more, I'm sure Lydia would love to hear from you on **0114 261 9191**.

Finally there is me, Yolande Tose, Parent Partnership Co-ordinator, and my role is to ensure that we provide you with the range of advice, help and support that you want and need.

There is a statutory requirement for us to provide parent/carers of children

with special educational needs and disabilities with impartial, confidential information, advice and support on all matters relating to their child's education. Whilst we are employed by the local authority, we operate 'at arm's length' from the authority and any information or advice we give you is firmly based in the law and the Special Educational Needs Code of Practice, not local policy and practice.

We have recently established a multi-agency Steering Group that has a membership that is predominantly parent/carers and is chaired by a parent. It is this group's remit to monitor and ensure that SPPS maintains it's impartiality, confidentiality and continues to operate 'at arm's length'.

Using our service is completely voluntary and, as we do not take referrals from other professionals and agencies, parent/carers have to contact us themselves and ask us to help them.

## We provide:

Completely confidential and impartial information & advice over the telephone

Completely confidential and impartial information & advice face to face either in the parent/carer's home or at a venue of their choosing

Explanations of their rights and of

their child's rights

Explanations of their duties and the duties, roles and responsibilities of everyone else

Explanations of the jargon used by schools, local authority officers and other professionals

Help in understanding 'the system'

Help in understanding the letters, reports etc that they may receive about their child

Help in writing letters or reports

Help in making complaints

Help in registering formal appeals and with the whole appeal process

Help to prepare for meetings

Support at meetings

Signposting to other agencies and services relevant to their individual need

Information about support for other parents in similar circumstances

A variety of leaflets covering a range of topics and useful information.

But we do not take over, we do not act without parent/carer's express permission, we do not gather or share information without their permission. We try to put them back in charge.

Our new telephone number is **0114 261 9191**. If you think Parent Partnership Service could help you, or you would like more information, please do not hesitate to contact us.



## Sheffield Parent Partnership Service HAS MOVED!

New telephone number is **0114 261 9191**

Our new address is:

Darnall Education Centre, Star Works, 212 Darnall Road, Sheffield S9 5AF.

# Cycling for All

The benefits of cycling include weight management, a lowered risk of heart disease, improved self-confidence, wellbeing and tolerance to stress, as well as reducing tiredness and difficulties with sleep

With the help of the CTC (Cyclist Touring Club), Parks and Countryside, Sheffield Health Authority and Sheffield City Council, the Cycling for All project was born. Cycling for All is an inclusive cycling project that aims to make cycling available to everyone. Sessions are currently running at Hillsborough Park, which is easily accessible by bus or tram, so there's never been a better time to get involved! Sessions start with an introduction to the benefits of cycling and then trained instructors introduce some gentle and pleasant cycling through the park. Participants can try out a range of bikes and borrow helmets at the venue. You can ride in small groups, or get that extra support if needed. And the best bit is, there's no experience necessary! So come along, even if you have never cycled before.

Bikes are provided along with

qualified cycle trainers. The project introduces cycling to everyone: young and old, including people with a disability and those who have experienced health issues, as well as anyone wishing to get healthier, fitter and more confident on a bike.

To book a place and for further information, contact **Nick Blood**: Tel **(0114) 2346052** or

Steve Marsden:  
Tel: **(0114) 250 0613**

E-mail: [steve.marsden@ctc.org.uk](mailto:steve.marsden@ctc.org.uk)



**Thursday, 25th November 2010**

**9.30am - 4.30pm**

**Reebok Stadium**

Premier Suite, Middlebrook  
Exhibition Centre,

Burnden Way, Bolton, BL6 6JW  
(Junction 6 M61)

One of the largest UK exhibitions

dedicated to disabled children, their families and the professionals who work with them.

Information on mobility, seating, beds, communication, access, education, toys, transport, style, sensory, sports and leisure, and more.

A programme of FREE seminars and discussions for parents and professionals will take place alongside the event.

Dates for your Diary:

- Kidz South - 9th June 2011 - Rivermead Leisure Complex, Reading.
- Kidz in the Middle - 10th March

2011 - Jaguar Exhibition Hall at the Ricoh Arena, Coventry.

For visitors' FREE entry tickets or further information on any of our Kidz events call organisers Disabled Living, Manchester.

**0161 214 5959/5962**

E-mail: [info@disabledliving.co.uk](mailto:info@disabledliving.co.uk)

For updates visit:

[www.kidzupnorth.co.uk](http://www.kidzupnorth.co.uk)

Contact:

**Disabled Living**

Redbank House, 4 St Chad's Street,  
Cheetham, Manchester M8 8QA.

Registered Charity 224742

Kidz is a Trademark registered to Disabled Living, Manchester.

# Home Access – helping your family

If you are a family on a low income and have a child with disabilities or special educational needs, you may be eligible for a Home Access grant to buy a specially adapted computer, a year's Internet access, educational software and support. Also, if you qualify for the scheme, your child will be assessed so that a computer can be tailor made to their specific needs. As this is a government scheme, there are no hidden catches.

The Home Access programme aims to help those with special educational needs or disabilities get the most out of education. Access to a computer at home can also help ensure that all children have the computer skills that are essential in the world, and which are in the world of work, and are increasingly important in accessing key services and information. The aim is to enable children with disabilities or special educational needs gain the independence that computer access can provide.

To qualify for the Home Access grants you will need to be:

- A family on an income of less than £16,190 and on certain benefits (income-based Jobseeker's Allowance, Income Support, Child Tax Credit, income-based Employment Support Allowance or the guaranteed element of the Pension Credit but not Working Tax Credit) or your child

qualifies for free school meals

Your child will need to be:

- In school years three to nine (roughly ages seven to fourteen)
- Attending a state school in England or have a place in a school paid for by an English Local Authority

To support your claim for additional support and a tailor made computer for your child, you will need to be able to provide either:

- A Statement of Special Educational Needs or
- Proof of receipt of Living Disability Allowance or
- Part of the application form completed by the Special Educational Needs Coordinator (SENCO) at your child's school

If you think your child might be eligible for a grant, please phone the **Home Access Grant Helpline** on **0333 200 1004** for a short eligibility check and to get an application form. But please apply soon. There are only 12,000 grants available and they are being allocated on a first come, first served basis.



## Information for Working Families

Working Families is a charity aimed at ensuring a better deal for working parents and their children in terms of benefits, flexible working arrangements and childcare. They can help families and their employers to find a better balance between responsibilities at home and at work, as well as offering practical advice. There is a dedicated helpline for parents to call with all their queries regarding working rights. They also produce printable information on a

variety of topics, including Childcare for Disabled Children, which can be downloaded from their website. Working Families also produce a free newsletter which parents can subscribe to via the website or helpline. Contact details below:

Tel. **020 7253 7253**  
(General Helpline)

Tel. **020 7017 0072** (for enquiries relating to disability)

[www.workingfamilies.org.uk](http://www.workingfamilies.org.uk)

# Free Attractions!

Merlin Entertainments Group (Merlin) is one of the largest attractions operators in the world, with nearly 60 attractions in 12 countries. Merlin Group and its attractions have often helped other charities to make a special day for children, but in 2008 they decided to set up their own charity for this purpose - Merlin's Magic Wand!

## What does the charity offer?

The charity has been given access to a large number of complementary tickets to Merlin's attractions. These will be used to provide a fabulous experience for children who are disadvantaged in some way.

Merlin has also committed £100,000 to the charity to assist with any running costs and to provide possible financial support for applicants in terms of travel costs, where there is financial hardship.

## Which attractions does Merlin's Magic Wand have access to?

They can provide tickets to any of the attractions in Merlin's worldwide group. There are nearly sixty attractions in total, which include Sea Life, Sea Life Sanctuaries, Legoland, Madame Tussauds, Alton Towers, The London Eye, The Dungeons, Thorpe Park, Warwick Castle and Chessington World of Adventure.

Applications may come from individuals, families, organisations/groups or charities.

Children are eligible for one trip per calendar year.

To apply, families can complete an online application form or, alternatively, download the form and post it back to the Merlin group.

Visit <http://www.merlinsmagicwand.org>.

If you haven't got access to a PC and/or printer don't worry! Contact **SIGN** information service on **(0114) 266 9476** and they will be happy to print out an application form and post it out to you.

## Update on the Sheffield Carers Strategy and the Formation of the Carers and Young Carers Board

### Sheffield Carers Strategy

Earlier this year a citywide consultation with carers was carried out looking at the priorities in the Sheffield Carers Strategy. The Strategy document was written with carers and staff from the Carers Centre, Sheffield PCT, Sheffield Council and a range of voluntary organisations that support carers.

People were very positive about the strategy and what it sets out to do. They also felt that the right aims and the priorities had been chosen to improve carers' lives. People felt that it was very important that the strategy was implemented and the Carers and Young Carers Board was set up to ensure that this was done.

The strategy and the establishment of the Carers and Young Carers Board was approved by the Sheffield Health and Wellbeing Board in June this year.

Full copies of the Carers Strategy are available at [www.sheffield.gov.uk/scap](http://www.sheffield.gov.uk/scap)

### Carers and Young Carers Board

We have provisionally set a date in late October for the first meeting of the Carers and Young Carers Board. The board will be responsible for implementing the Carers Strategy and ensuring that organisations agree action plans that help carers. Before then we are holding a workshop for Carers who are interested in being members of the board. This workshop will outline the roles and responsibilities of board members and agree terms of reference so that everyone is clear about the job the board has to do.

For more information contact

**Cherry Daniels:**

Tel. (0114) 2734746

E-mail: [Cherry.Daniels@sheffield.gov.uk](mailto:Cherry.Daniels@sheffield.gov.uk)

# Tell us what you think about... Sheffield's Inclusive Learning Strategy

The City Council is currently in the process of developing its strategy and policy for meeting the Individual Educational Needs of children and young people especially those with special or additional needs. The consultation opened on 1st September and will run to 15th October.

We want to make sure that all pupils in all learning settings and schools are welcomed, feel valued and have their needs met, whatever their background or ability.

We want parents/carers to have a genuine choice about which school or learning setting they want for their child and have confidence that whether it is mainstream or specialist provision, it will meet the needs of their child every day.

Please help us to get this right by telling us what you think about

our proposals, about what works well in schools and settings now as well as what doesn't and needs to change – we look forward to hearing from parents/carers, children and young people, schools and other professionals.

You can find out more and complete a consultation questionnaire by visiting;

[www.sheffield.gov.uk/inclusivelearning](http://www.sheffield.gov.uk/inclusivelearning)

Information and questionnaires are also available at Schools, Childcare Centres, in Libraries and the City Councils' First Point receptions. Or you can request one from;

**Mandy Smith, Project Manager,  
Inclusive Learning Strategy**

Tel 0114 293 0979

E-mail: [Mandy.smith@sheffield.gov.uk](mailto:Mandy.smith@sheffield.gov.uk)



# Update on the Sheffield Strategy for Children and Young Persons with a Disability

## (Formally the Learning Difficulties and/or Disabilities Strategy)

On the 22nd of June the 0-19+ Partnership Board held a workshop that focussed on disability. There was good attendance from across the board including Parents/Carers, the voluntary sector, NHS Sheffield and the Local Authority. There were presentations from some parent/carers, who praised the democratic process by which the strategy had been developed, but expressed concerns about the need for the strategy to lead to real change on the ground. By way of illustration, some parents shared their personal stories and concerns. Soul and Fame, a young people's action group who works across the city also gave a presentation. The draft strategy was presented and discussed as part of the workshop.

Following the discussions that took place at the workshop, the strategy has continued to be developed taking

account of the points raised. The commitment to reflect the input and concerns of all stakeholders has remained central to this process. It is intended to undertake additional wider, qualified consultation from the 31st of August until the 1st of October (details of where to send comments below). The revised draft is also being presented to the relevant Senior Leadership Teams across the council allowing for comment and is scheduled to return to the 0-19+ Board at the next business meeting on 28<sup>th</sup> October for sign-off. Once approval has been given it will be presented to a full council meeting before moving to the implementation stage.

This process will continue to be overseen by the LDD Strategic Partnership Group of which Sheffield Parent Carers Forum are members. If you require any further information,

please contact Mark Alexander, Team Manager Strategy Delivery, on **0114 239 8336** or E-mail: [mark.alexander@sheffield.gov.uk](mailto:mark.alexander@sheffield.gov.uk)

The strategy will be available on the NHS Sheffield website, The Sheffield Parent Carers Forum website, Schoolpoint, Sheffield City Council website, Sheffield Information Link website and the 0-19 Partnership Board website. Some hardcopies will be available from Sign at Ryegate, In Ryegate waiting areas and in Sheffield Information Link's Leopold Street office.

Comments should be sent to:

E-mail:

[cypd\\_ldd\\_strategy@sheffield.gov.uk](mailto:cypd_ldd_strategy@sheffield.gov.uk)

Post: **Team Manager, Strategy Delivery**

575 Queen Mary Road  
Sheffield, S2 1EE.

# Voice UK

Voice UK is a national charity which provides support and advice to vulnerable people who have experienced crime or abuse, or who may be at risk of being maltreated. They place particular emphasis on supporting and advising people with disabilities and their families. Voice UK work with parents, carers and professionals in order to spread awareness about the particular issues faced by the most vulnerable people in our society. They can provide help and information about how to do things like making a complaint, and what to do if you are a victim of, or witness to, a crime. The services provided by Voice UK include:

- Delivering "Keeping Safe" workshops to vulnerable people

(children and adults).

- Delivering training to professionals and organisations.
- Providing local face-to-face support for people with a disability, who have been experiencing or are at risk of experiencing maltreatment.
- Providing specialist support, information and advice to organisations supporting victims of crime, but who are not specialists in working with people who are disabled.
- Establishing local self-help groups for vulnerable victims of crime.
- Researching and

collecting data on the incident rates of bullying and abuse against people with disabilities.

For further information and/ or advice please contact the Helpline on **0808 802 8686**, or contact **James Gibbs** (Regional Co-ordinator) directly on **07879 555 457**.

VOICE UK Greater Manchester  
Room 216, City View House  
5 Union Street Manchester  
M12 4JD



# VOICE UK

promoting justice and wellbeing for vulnerable victims

# Fun and Friendship Clubs Empower Young Disabled People

Whizz-Kidz is a national charity, established in 1990, which aims to give disabled children and young people independence to support an active childhood – at home, at school and at play. We do this by providing them with mobility equipment such as powered and manual wheelchairs. In fact, Whizz-Kidz is the largest provider of young people's mobility equipment outside of the NHS.

But providing the right wheelchair is only the start of a life journey to independence. Whizz-Kidz decided to start providing a series of innovative 'Life Skills' services to young wheelchair users.

To make this possible Whizz-Kidz developed a network of young disabled people around the UK called 'Ambassadors'. The aim of the network is to give young disabled people a voice on a regional and national level – as well as providing them with spaces to learn new skills, make new friends and have fun.

**Ambassador Clubs** are the places where young disabled people can meet regularly and get involved in lots of exciting projects, training and activities as well as making new friends. One of the main objectives of the clubs is to train older members to become leaders and then for them to run the clubs themselves assisted by volunteers and Whizz-Kidz staff.

## What happens at a club?

Ambassador clubs give young people with mobility needs a space to meet new friends, have fun, and learn new skills, which will increase their confidence. The club in Sheffield runs from 10.00am – 3.30pm at Talbot Special School – and takes place during school holidays and on Saturdays. There are lots of exciting activities to take part in; such as our accredited Skillz for Life programme, learning how to campaign, playing disability sports, making short films, getting involved in drama, art and music sessions and much more.

## Listen to someone who's been there

Lucy, 16: "You guys have helped to open up a whole lot more opportunities to me, just when I'd

started to think that nothing could help me. I really enjoyed taking part in all the fun activities and the Skillz for Life sessions are fab! For the first time I don't care what other people think of me, I think that's probably why I had the most fun I've had for a long time!"

With over 500 young people taking part in Whizz-Kidz Ambassador Clubs so far this makes us the biggest network of young disabled people in the UK. Come and join the fun!

For more information about the Sheffield Ambassador Club contact: **Ruth Madeley, Ambassador Club Co-ordinator (North of England)** on **07795 325928** or E-mail: **r.madeley@whizz-kidz.org.uk**



## New Service from Contact a Family

Contact a Family (CaF) provides support, advice and information for families with disabled children, no matter what their condition or disability. They have recently launched Cash Counts, a new online service dedicated to ensuring that families with disabled children are getting all the benefits they are eligible for.

The service features an online benefits calculator, which helps families to work out their entitlement, as well as a Top Tips guide on benefits available to families with disabled children. It includes a "frequently asked questions" page to help families navigate the complex benefits system.

CaF say "we urge families with a disabled child to use Cash Counts, or to telephone the Contact a Family Helpline to make sure they are getting every penny they are entitled to." To access the Cash Counts service visit: [www.cafamily.org.uk/cashcounts](http://www.cafamily.org.uk/cashcounts), or call the CaF Helpline on **0808 808 3555** or **textphone** on **0808 808 3556**.



# Listening Books

National charity Listening Books has launched a new download service enabling visually impaired and disabled people to listen to a choice of more than 1,000 titles on portable devices such as iPods or MP3 players. The library is free to members of Listening Books, although there is a small fee for annual membership of the organisation. Many people will already have an MP3 player or enabled phone in some form, and so this is an easy-to-use and cost-effective opportunity for young people to access the latest reads.

Listening Books patron Stephen Fry said: "I'm proud and delighted to be patron of the first audiobook charity to offer downloads to its members and excited about what this will mean for all print impaired people who can now listen on the go."

For more information contact:

**Listening Books**

Tel. **020 7407 9417**



Photo by Johnny Boylan

## Sheffield Parent Carer Forum to hold 3rd Conference

**Date: Monday 11th October 2010**

**Time: 10am to 2.30pm, lunch included**

**Venue: St. Mary's Church and Conference Centre, Bramall Lane**

It's that time of the year again! Here at the Sheffield Parent Carer Forum, we're busy organising our 3rd Parent Carer Conference, and we hope that many parents/carers of children and young people with disabilities and/or special educational needs will be able to attend.

This time, we've decided to focus on the topic of Education. We know from parents' feedback that whilst there are pockets of excellence, some disabled children are not having a good experience in Sheffield's schools, particularly in mainstream. We are working with the Council to change this, and we need your views to be able to represent as many parents as possible. Please come along and have your say!

The conference will include:

- Opportunities to meet other parents
- A consultation on a proposed new strategy for meeting pupils' additional needs in Sheffield (the "Inclusive Learning Strategy"). Parents will be able to attend a presentation about the strategy, ask questions, and complete a consultation questionnaire
- Group work on education-related topics
- A wide range of information stalls, e.g. on post-16 education, short breaks/respite, childcare, local parent support groups, SIGN and the Sheffield INDEX, and more

The conference is FREE of charge and lunch and refreshments are included.

Meet other parents and have a chat - newcomers are welcome! Just look out for the parents' badges and we will meet you on arrival. We are sorry that we cannot offer a crèche facility on the day.

To book your place, please visit our website ([www.sheffieldparentcarerforum.org.uk](http://www.sheffieldparentcarerforum.org.uk))

and complete the online booking form by Tuesday 5th October. If you haven't got internet access, you can also register by ringing our office on **0114 2521913** (leave a message if no answer).

**We hope to see you there!**



# Family information in your community



Sheffield  
Information  
Link



SIL's Charlene Fernandes and Trudie Smallwood show off the Two Ticks

Sheffield Information Link (SIL) is your Family Information Service, and provides helpful, reliable information to local parents and carers. We can help with issues such as choosing childcare, children's leisure activities, education, family support and much more. You may also have heard of SIGN, our specialist disability information service, which is based at Ryegate Children's Centre.

The SIL team is busy getting out and about in local communities all over Sheffield. We've found that it's often easier to access services at a venue close to home, and many people prefer to speak to our friendly team face-to-face. So we've increased our outreach programme – in 2009-10 the SIL team attended 414 information sessions around the city. That's 100 more than the previous year!

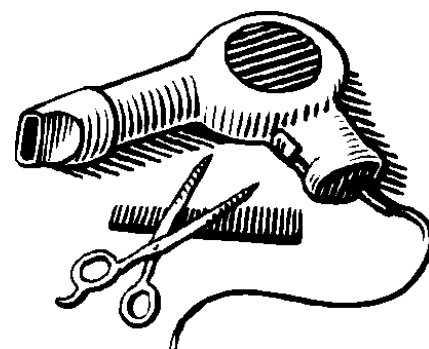
We regularly visit community venues all over Sheffield, so we'll be coming to a venue near you very soon. To find out when we're next in your area, have a look on our website [www.sheffinfoolink.org.uk](http://www.sheffinfoolink.org.uk), in the 'further information' box on the homepage. Or give us a call on **0114 275 6699**.

We're also pleased to announce that SIL has recently been awarded the 'Two ticks' Positive About Disabled People accreditation by Jobcentre Plus. To achieve the recognition SIL had to clearly demonstrate its commitment to equality in recruitment and retention of disabled staff.

Deputy Chief Executive of SIL, Trudie Smallwood says the whole organisation feels a sense of pride in being recognised for its commitment to supporting disabled people. "We recognise that everyone should have the chance to achieve their best and that no barriers should be placed in their way.... We are delighted to be recognised in this way."

To contact Sheffield Information Link, call **0114 275 6699**, E-mail: [info@sheffinfoolink.org.uk](mailto:info@sheffinfoolink.org.uk) or call in to our shop at 11 Leopold Street, Sheffield, S1 2GY on Monday (9.30-5.30), Wednesday (9.30-6.00) or Friday (9.30-4.00).

To contact SIGN Information Service, call **0114 266 9476**, E-mail: [sign@sheffinfoolink.org.uk](mailto:sign@sheffinfoolink.org.uk) or call into the Resource Centre, Ryegate Children's Centre, Tapton Crescent Road, Sheffield S10 5DD (Monday-Friday 10.00-3.00).



Do you have a child Under 5 with Additional / Special Needs?

Do you have difficulty in accessing a hairdressing salon?

Toni & Guy have a number of volunteer hairdressers who will be cutting the hair of children with additional needs. See below for future venues, dates and times we have confirmed so far:

## Dates and Times

**VENUE:** Darnall Children's Centre  
Staniforth Road S9 4RA

**2010: Tuesdays**

19th October, 16th November,  
21st December

**4-6pm**

**2011: Tuesdays**

18th January, 22nd February

**VENUE:** Woodthorpe Children's Centre  
Lewis Road S13 8DA

**2010: Mondays**

18th October, 15th November,  
20th December

**3-5 pm**

**2011: Mondays**

17th January, 21st February

We hope to offer this service at other venues soon.

The cost of each haircut will be £3 per child and all monies collected will be donated to the Ryegate Children's Centre.

To book an appointment or if you have any questions please phone Sarah on: **07974 868747**